

Brush Nickel (Finish ID : 3)

## LITTLEWOOD EDGE PULL HANDLE

	Item Code	Size (mm & Inches)	Material	Size (Inches)				Fig.
				A	B	C	D	
1	PL.889.16.XX	16mm (0.63")	Brass	1.63	2.36	0.63	0.47	1
2	PL.889.2".XX	50.8mm (2")	Brass	3	2.36	2	0.47	1
3	PL.889.4".XX	101.6mm (4")	Brass	5	2.36	4	0.47	1
4	PL.889.5".XX	127mm (5")	Brass	6	2.36	5	0.47	1
5	PL.889.6".XX	152.4mm (6")	Brass	7	2.36	6	0.47	1
6	PL.889.8".XX	203.2mm (8")	Brass	9	2.36	8	0.47	1
7	PL.889.10".XX	254mm (10")	Brass	11	2.36	10	0.47	1
8	PL.889.12".XX	304.8mm (12")	Brass	13	2.36	12	0.47	1
9	PL.889.16".XX	406.4mm (16")	Brass	17	2.36	16	0.47	1
10	PL.889.18".XX	457.2mm (18")	Brass	19	2.36	18	0.47	1

"XX" in item code denotes Finish ID.

This product is Supplied with STC Screw Flat Head 6x19mm

	Item Code	Size (mm & Inches)	Material	Size (Inches)				Fig.
				A	B	C	D	
<b>11</b>	PL.889.24".XX	609.6mm (24")	Brass	25	2.36	24	0.47	1
<b>12</b>	PL.889.26".XX	660.4mm (26")	Brass	27	2.36	26	0.47	1

"XX" in item code denotes Finish ID.

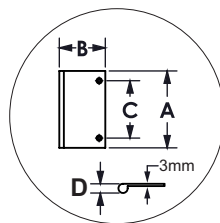


FIG. 1

This product is Supplied with STC Screw Flat Head 6x19mm

## How to Order



### Littlewood Edge Pull Handle Finish Options

Base Material : Brass			Standard Finishes (2-3 Weeks Delivery)		
					
Bright Chrome (Finish ID:2)	Brush Nickel (Finish ID:3)	Oil Rubbed Bronze (Finish ID:5)	Unlacquered Polished Brass (Finish ID:7U)	Polished Nickel (Finish ID:8)	Satin Brass (Finish ID:13)
Base Material : Brass			Custom Finishes (3-4 Weeks Delivery)*		
					
Lacquered Polished Brass (Finish ID:7L)	Antique Copper (Finish ID:15)	Matte Black (Finish ID:19)	Titanium (Finish ID:79)	Ombre (Finish ID:92)	Brush Chrome (Finish ID:95)

- Custom finishes cannot be returned or refunded. We are unable to accept cancellations for custom finish order unless within 48 hours of the order being placed.
- We have uniform pricing for all non-hammered finishes listed above as long as base material and size is same.
- Contact us for customized finishes, refer pages F1, F2, F3 & F4 for finish glossary.
- Backplate options refer page DBP1-1 to DBP2-1.