



Satin Brass (Finish ID : 13)

CHICAGO LOOP PULL HANDLE

	Item Code	Size (mm & Inches)	Material	Size (Inches)				Fig.
				A	B	C	D	
1	PL.874.3".XX	76.2mm (3")	Brass	5.75	0.28	3	1.3	1
2	PL.874.5".XX	127mm (5")	Brass	7.75	0.28	5	1.3	1
3	PL.874.8".XX	203.2mm (8")	Brass	10.75	0.28	8	1.3	1
4	PL.874.10".XX	254mm (10")	Brass	12.75	0.28	10	1.3	1
5	PL.874.12".XX	304.8mm (12")	Brass	14.75	0.28	12	1.3	1

"XX" in item code denotes Finish ID.

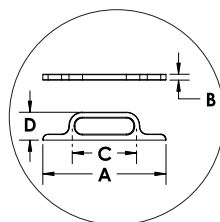


FIG. 1

This product is Supplied with M4x25mm screws.
This product is Supplied with M4x45mm break off screws.

How to Order

PL.874.3".13

PULL HANDLE STYLE : CHICAGO LOOP SIZE: CC 3 INCH FINISH ID : 13

Chicago Loop Pull Handle Finish Options

Base Material : Brass			Standard Finishes (2-3 Weeks Delivery)		
					
Bright Chrome (Finish ID:2)	Brush Nickel (Finish ID:3)	Aged Brass (Finish ID:4)	Unlacquered Polished Brass (Finish ID:7U)	Polished Nickel (Finish ID:8)	Satin Brass (Finish ID:13)
Base Material : Brass			Custom Finishes (3-4 Weeks Delivery)*		
					
Lacquered Polished Brass (Finish ID:7L)	Matte Black (Finish ID:19)	White Epoxy (Finish ID:42)	Graphite (Finish ID:61)	Titanium (Finish ID:79)	Brush Chrome (Finish ID:95)

- Custom finishes cannot be returned or refunded. We are unable to accept cancellations for custom finish order unless within 48 hours of the order being placed.
- We have uniform pricing for all non-hammered finishes listed above as long as base material and size is same.
- Contact us for customized finishes, refer pages F1, F2, F3 & F4 for finish glossary.
- Backplate options refer page DBP1-1 to DBP2-1.