



Titanium (Finish ID:79)

## MARELLA KNOB

“Marella with its simple smooth design and concentric grooves could almost be seeking inspiration from the famous Guggenheim Museum in New York.”

	Item Code	Size (mm & Inches)	Material	Size (Inches)				Fig.
				A	B	C	D	
1	KNB.857.28.XX	28mm (1.10")	Brass	1	1.13	0.5	N/A	1
2	KNB.857.32.XX	32mm (1.26")	Brass	1.12	1.26	0.59	N/A	1

"XX" in item code denotes Finish ID.

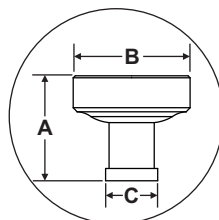


FIG. 1

This product is Supplied with M4x25mm screws.  
This product is Supplied with M4x45mm break off screws.

## How to Order

**KNB.857.28.79**

KNOB    STYLE : MARELLA    SIZE DIAMETER : 28 MM    FINISH ID : 79

## Marella Knob Finish Options

Base Material : Brass		Standard Finishes (2-3 Weeks Delivery)				
						
Bright Chrome (Finish ID:2)	Brush Nickel (Finish ID:3)	Unlacquered Polished Brass (Finish ID:7U)	Polished Nickel (Finish ID:8)	Satin Brass (Finish ID:13)		
Base Material : Brass		Custom Finishes (3-4 Weeks Delivery)*				
						
Lacquered Polished Brass (Finish ID:7L)	Matte Black (Finish ID:19)	Graphite (Finish ID:61)	Titanium (Finish ID:79)	Brush Chrome (Finish ID:95)		

- Custom finishes cannot be returned or refunded. We are unable to accept cancellations for custom finish order unless within 48 hours of the order being placed.
- We have uniform pricing for all non-hammered finishes listed above as long as base material and size is same.
- Contact us for customized finishes, refer pages F1, F2, F3 & F4 for finish glossary.
- Backplate options refer page KBP1-1 to KBP14-1.