



Matte Black (Finish ID : 19)

BAUHAUS KNOB

“Radically simplified form and function are at the heart of Bauhaus design – reflected well in this cupboard knob.”

	Item Code	Size (mm & Inches)	Material	Size (Inches)				Fig.
				A	B	C	D	
1	KNB.611.19.XX	19mm (0.75")	Brass	0.98	0.75	N/A	N/A	1
2	KNB.611.25.XX	25mm (0.98")	Brass	1.18	0.98	N/A	N/A	1
3	KNB.611.28.XX	28mm (1.10")	Brass	1.38	1.1	N/A	N/A	1
4	KNB.611.32.XX	32mm (1.26")	Brass	1.61	1.26	N/A	N/A	1

“XX” in item code denotes Finish ID.

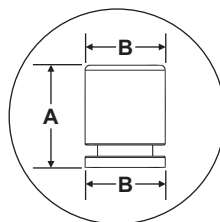


FIG. 1

This product is Supplied with M4x25mm screws.
This product is Supplied with M4x45mm break off screws.

How to Order



Bauhaus Knob Finish Options

Base Material : Brass			Standard Finishes (2-3 Weeks Delivery)			
						
Bright Chrome (Finish ID:2)	Brush Nickel (Finish ID:3)	Aged Brass (Finish ID:4)	Unlacquered Polished Brass (Finish ID:7U)	Polished Nickel (Finish ID:8)	Satin Brass (Finish ID:13)	
Base Material : Brass			Custom Finishes (3-4 Weeks Delivery)*			
						
Lacquered Polished Brass (Finish ID:7L)	Matte Black (Finish ID:19)	White Epoxy (Finish ID:42)	Graphite (Finish ID:61)	Titanium (Finish ID:79)	Ombre (Finish ID:92)	Brush Chrome (Finish ID:95)

- Custom finishes cannot be returned or refunded. We are unable to accept cancellations for custom finish order unless within 48 hours of the order being placed.
- We have uniform pricing for all non-hammered finishes listed above as long as base material and size is same.
- Contact us for customized finishes, refer pages F1, F2, F3 & F4 for finish glossary.
- Backplate options refer page KBP1-1 to KBP14-1.