



Satin Brass (Finish ID : 13)

SULA KNOB WITH RECTANGULAR BACK PLATE

“The Sula shares its inspiration with a medieval chalice which is derived from the Latin word Calix also simply known as a decorative cup.”

	Item Code	Size (mm & Inches)	Material	Size (Inches)				Fig.
				A	B	C	D	
1	KNB.606.32.XX.RTB	32mm (1.26")	Brass	1.3	1.26	1.54	2.32	1
2	KNB.606.32.XX.RTB	32mm (1.26")	Hammered over Brass	1.3	1.26	1.54	2.32	1

“XX” in item code denotes Finish ID.

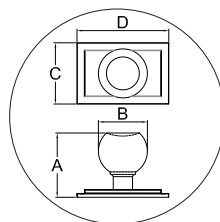
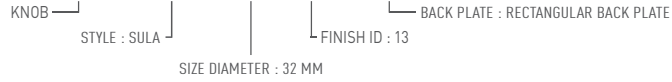


FIG. 1

This product is Supplied with M4x30mm screws.
This product is Supplied with M4x45mm break off screws.

How to Order

KNB.606.32.13.RTB



Sula Knob With Rectangular Back Plate Finish Options

Base Material : Brass			Standard Finishes (2-3 Weeks Delivery)			
						
Bright Chrome (Finish ID:2)	Brush Nickel (Finish ID:3)	Aged Brass (Finish ID:4)	Unlacquered Polished Brass (Finish ID:7U)	Polished Nickel (Finish ID:8)	Satin Brass (Finish ID:13)	
Base Material : Brass			Custom Finishes (3-4 Weeks Delivery)*			
						
Lacquered Polished Brass (Finish ID:7L)	Hammered over Brush Nickel (Finish ID:12-3)	Hammered over Aged Brass (Finish ID:12-4)	Hammered Over Oil Rubbed Bronze (Finish ID:12-5)	Hammered over Polished Nickel (Finish ID:12-8)	Hammered over Satin Brass (Finish ID:12-13)	Matte Black (Finish ID:19)
						
Graphite (Finish ID:61)	Titanium (Finish ID:79)	Brush Chrome (Finish ID:95)				

- Custom finishes cannot be returned or refunded. We are unable to accept cancellations for custom finish order unless within 48 hours of the order being placed.
- We have uniform pricing for all non-hammered finishes listed above as long as base material and size is same.
- Contact us for customized finishes, refer pages F1, F2, F3 & F4 for finish glossary.
- Backplate options refer page KBP1-1 to KBP14-1.