



Matte Black (Finish ID:19)

WRIGHT PERLA CUP PULL

“The Taj Mahal is a universally revered architectural masterpiece of world heritage, the bevelled geometric shape of the base of the Taj is the inspiration behind Wright Perla.”

Item Code	Size (mm & Inches)	Material	Size (Inches)				Fig.
			A	B	C	D	
1 CP.692.96.XX	96mm (3.78")	Brass	4.41	1.57	3.78	0.98	1

“XX” in item code denotes Finish ID.

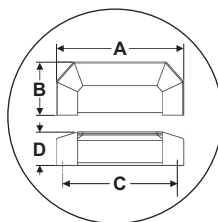


FIG. 1

This product is Supplied with M4x25mm screws.
This product is Supplied with M4x45mm break off screws.

How to Order

CP.692.96.19

CUP PULL STYLE : WRIGHT PERLA SIZE : CC 96MM FINISH ID : 19

Wright Perla Cup Pull Finish Options

Base Material : Brass			Standard Finishes (2-3 Weeks Delivery)		
					
Bright Chrome (Finish ID:2)	Brush Nickel (Finish ID:3)	Aged Brass (Finish ID:4)	Unlacquered Polished Brass (Finish ID:7U)	Polished Nickel (Finish ID:8)	Satin Brass (Finish ID:13)
Base Material : Brass			Custom Finishes (3-4 Weeks Delivery)*		
					
Lacquered Polished Brass (Finish ID:7L)	Matte Black (Finish ID:19)	Graphite (Finish ID:61)	Titanium (Finish 79)	Brush Chrome (Finish ID:95)	

- Custom finishes cannot be returned or refunded. We are unable to accept cancellations for custom finish order unless within 48 hours of the order being placed.
- We have uniform pricing for all non-hammered finishes listed above as long as base material and size is same.
- Contact us for customized finishes, refer pages F1, F2, F3 & F4 for finish glossary.